

# Your First Bill Explained

Bills can be complicated, so here is a guide to explain everything you need to know about yours.

**Relish™**

Visit us: [relish.net](http://relish.net)  
Call us: 0330 686 8000

We've calculated  
your first bill.



The account name limited  
99 The Road  
London  
X99 9XX

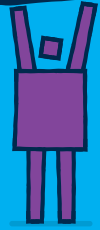
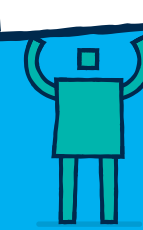
Your bill date: 1st July 2017  
Your bill number: 1234567  
Your account number: 99999999  
Your bill due date: 15th July 2017

## Your Relish bill...

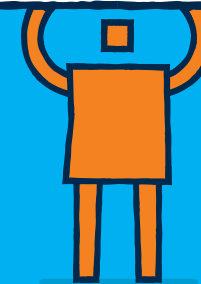
Monthly Plan	£28.72	1
Extras	£41.67	2
Total before VAT	£70.39	
VAT at 20% on £70.39	£14.07	
<b>Total this month</b>	<b>£84.46</b>	
Previous outstanding balance	£0.00	
Payments this month	£-50.00	
<b>Total amount due, including VAT</b>	<b>£34.46</b>	

The amount due will be charged to your credit or debit card on or immediately after 15th July 2017.

1. This might look more than you expect, but never fear there's an explanation. This includes your first month's bill, plus any extras if you joined part way through a month to make up the difference. There's a break down on the next page of the bill so you can see how it is calculated.



2. If you've chosen any optional extras you'll see them here.



**Relish®** Broadband  
*rebooted*

# Your First Bill Explained

**Relish**<sup>TM</sup>

Visit us: [relish.net](http://relish.net)  
Call us: 0330 686 8000

A bit more detail ...

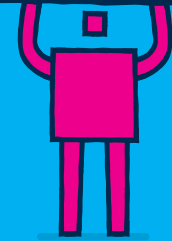
## Monthly Plan(s)

	Date(s)	Cost
1st Bill - Relish Home Unlimited - 447451610963	9th Jun 2017 - 30th Jun 2017	£12.05
Relish Home Unlimited - 447451610963	1st Jul 2017 - 31st Jul 2017	£16.67
<i>Last month you used 35.37GB</i>		
<b>Total</b>		<b>£28.72</b>

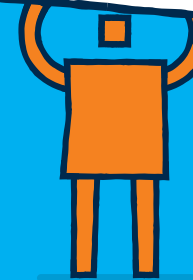
## Extra(s)

	Date(s)	Cost
1 High Street, London, SW7 4LX Relish Home Unlimited - 656454235054		
Indoor Hub	9th Jun 2017	£41.67
Additional Data Use	1st Jun 2017 - 30th Jun 2017	£0.00
<b>Total</b>		<b>£41.67</b>

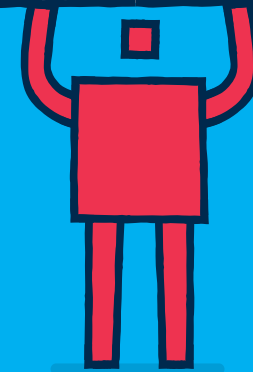
3. Here you can see the amount from when you first joined, until the start of your normal billing cycle.



4. This is the charge for your first full month. You always pay for the month in advance.



5. Here there would be a description of the extras that you may have chosen, for example; early delivery, paper bill, prepay boost etc.



**Relish**<sup>®</sup> Broadband  
rebooted