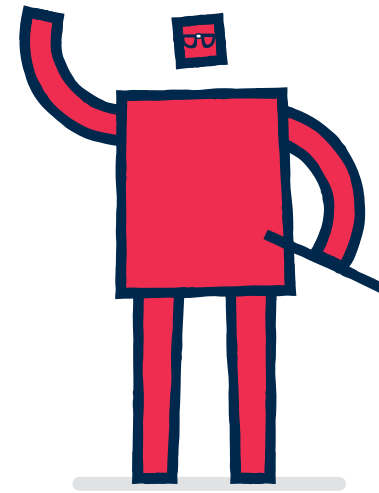


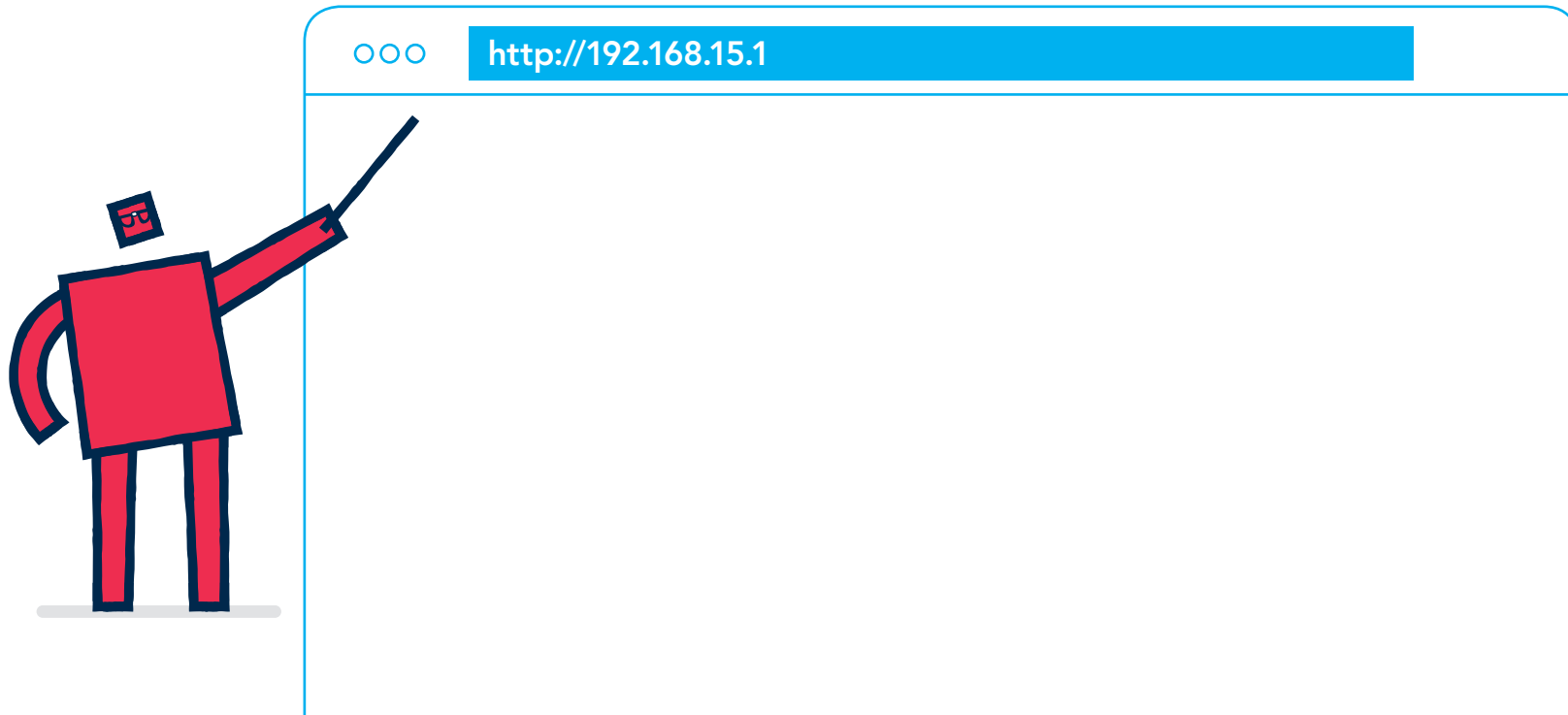
Port Forwarding.

Port Forwarding allows remote computers to connect to a specific device or service within a private local-area network (LAN).

To access Port Management using your Hub homepage, simply follow the steps in this document.



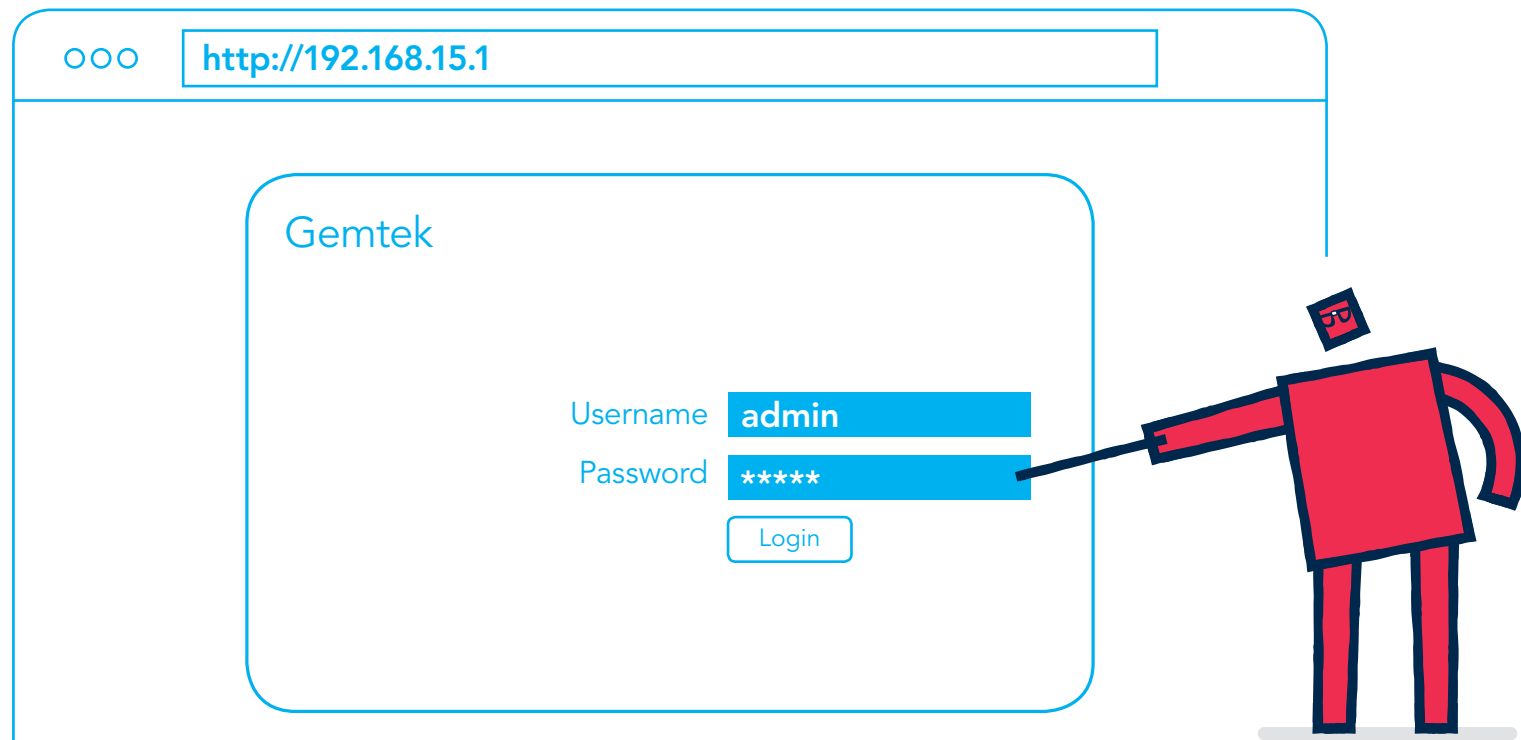
Step 1



Open your browser and type in the following address:

`http://192.168.15.1`

Step 2



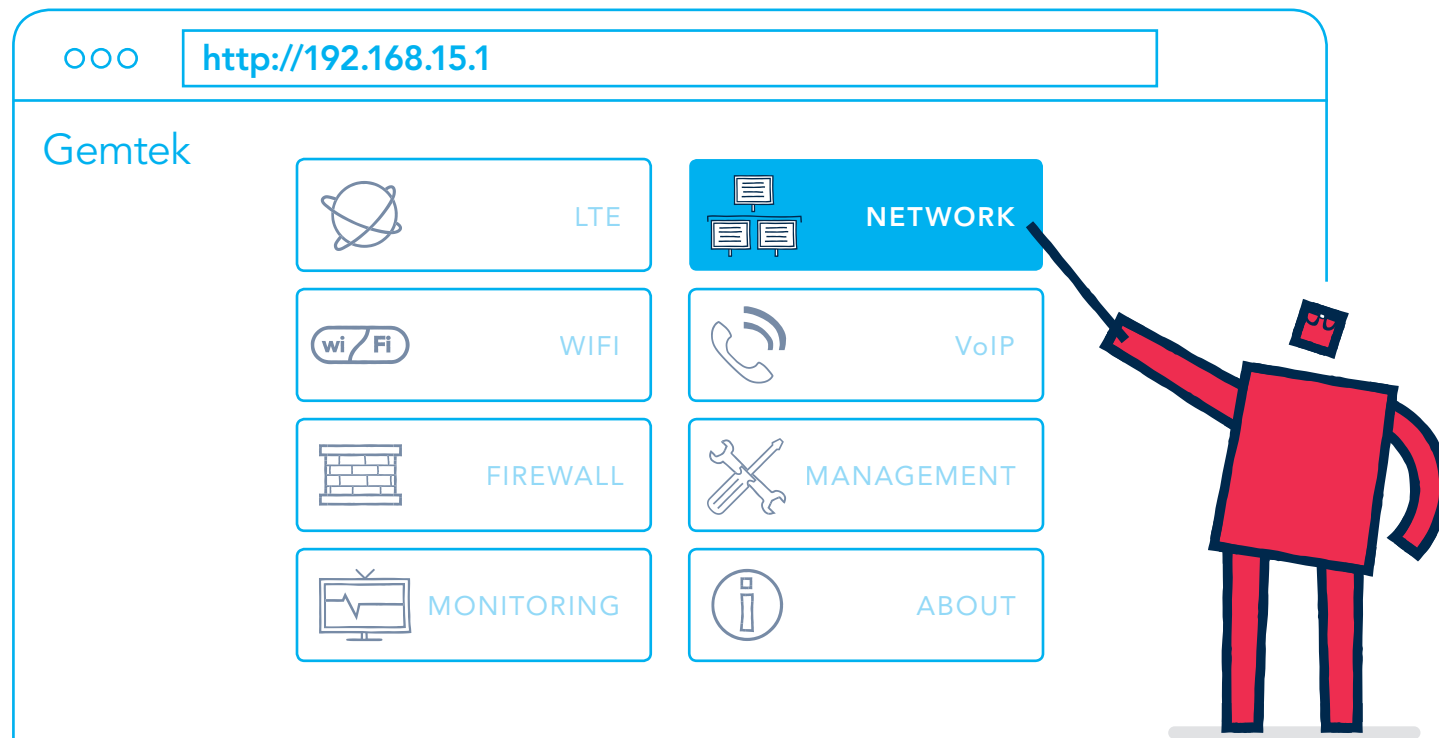
Enter your username and password.

If you haven't changed these, they will still be set to the default username and password when you received your Hub.

Username: admin

Password: admin

Step 3




You will then see the Hub homepage.
To access Port Management, click on 'Network'.

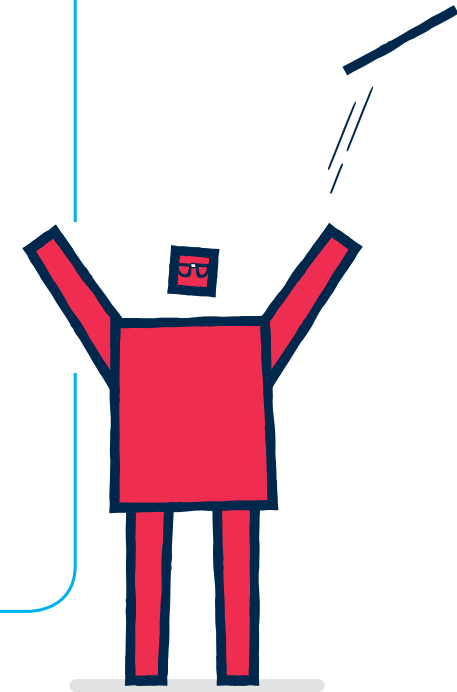
Step 4

Port forwarding

ADD +

Protocol	WAN Port		LAN Port		LAN IP	Enable	Delete
	Begin	End	Begin	End			
TCP ▼					192.168.15	<input checked="" type="checkbox"/>	

CANCEL APPLY



To add a new rule click 'Add+' and fill in the empty fields with the correct numbers*.
Once you have completed this, make sure the 'enable' check box is ticked, click apply and you're good to go.
To delete a rule simply click the bin under 'delete'.

*Important info: WAN Port 53-68-113-123-161-2948-7547-58603 are reserved for Relish use.