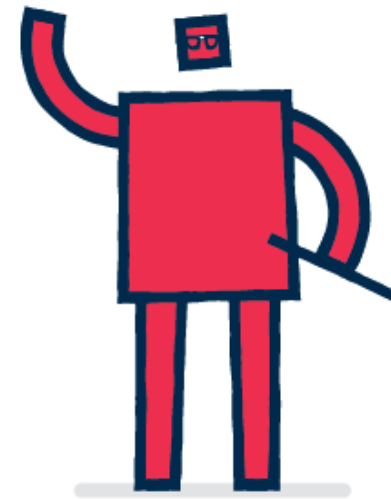


Gemtek Home Hub

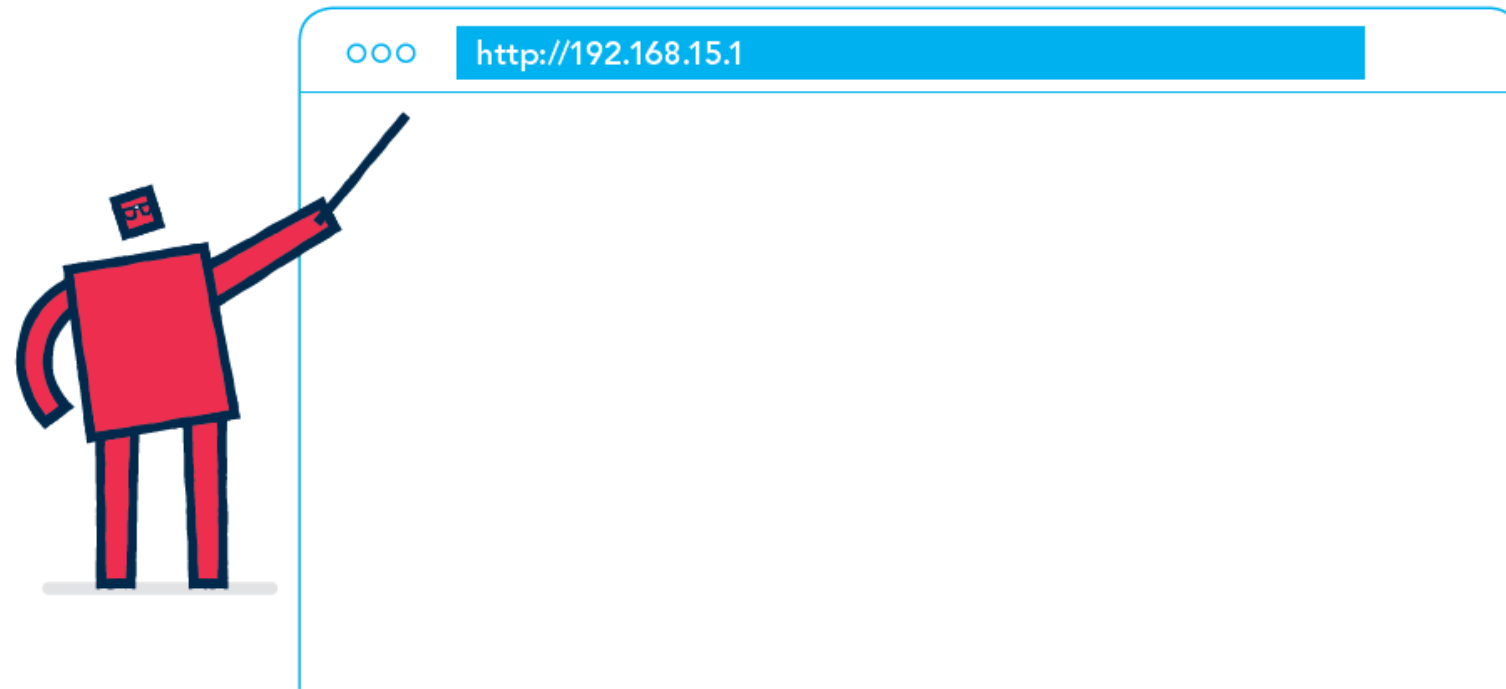
Port Forwarding

Port forwarding allows remote computers to connect to a specific device or service within a private local-area network (LAN)

To set up port forwarding using your hub homepage, simply follow the steps in this document.

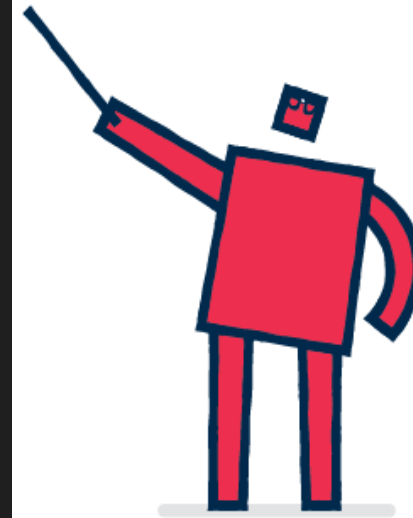


Step 1



Open your browser and type in the following address:
`http://192.168.15.1`

Step 2

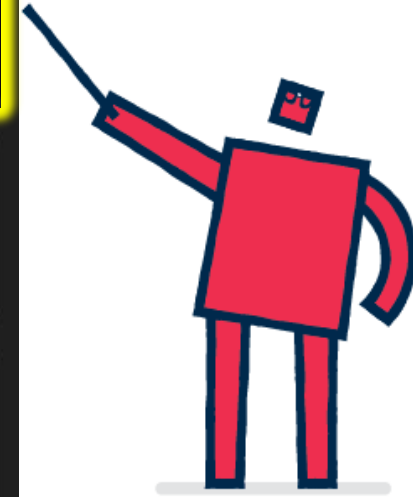


Enter your username and password.
If you haven't previously changed these, they will still be set to the default
username and password from when you received your hub:

Username: admin
Password: admin

Relish[®]

Step 3



You should now see the hub homepage. Here you can access the port management settings by clicking on the 'network' tile.

Step 4



The image shows a network configuration interface with a sidebar on the left and a main content area. The sidebar has a 'Network' header and several menu items: Status, Network Mode, DHCP Server, QoS, Port Management (highlighted with a yellow bar), and MGMT Service. The main content area is titled 'Port Management' and has two tabs: 'Port Forwarding' (selected) and 'Port Trigger'. In the 'Port Forwarding' tab, there is a table with the following data:

Protocol	WAN Port		LAN Port		LAN IP	Enable	Delete
	Begin	End	Begin	End			
TCP ▼	1234	1234	1234	1234	192.168.15.20	<input checked="" type="checkbox"/>	

There is an 'Add +' button above the table and 'Cancel' and 'Apply' buttons at the bottom of the interface.

- Click the 'Add +' button to create a new rule and enter the beginning and end port numbers in both WAN and LAN port box.
- Enter the IP address of the computer/tablet/phone you want the port forwarded to.
- Click the 'Apply' button and you are all set.
- You can use the 'Add +' button again if you want to set up multiple port forwarding rules.